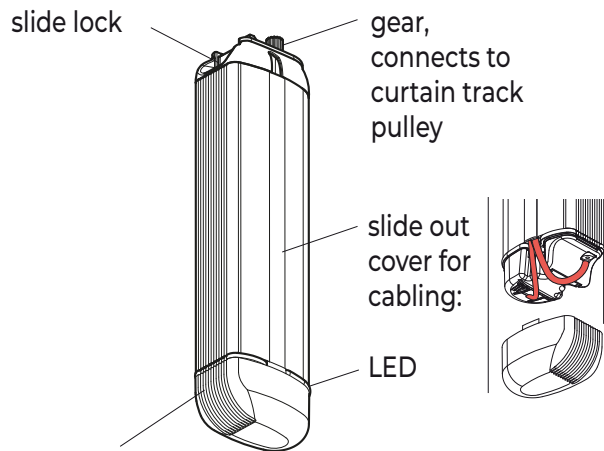




Please first read this manual carefully.

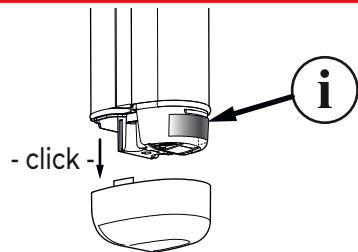
front side - Installing a G-Motion motor unit on a Qurails 6200 curtain rail system.
back side - Setting end positions.

1 Overview components



cover : remove to access connector-area and basic controlling buttons

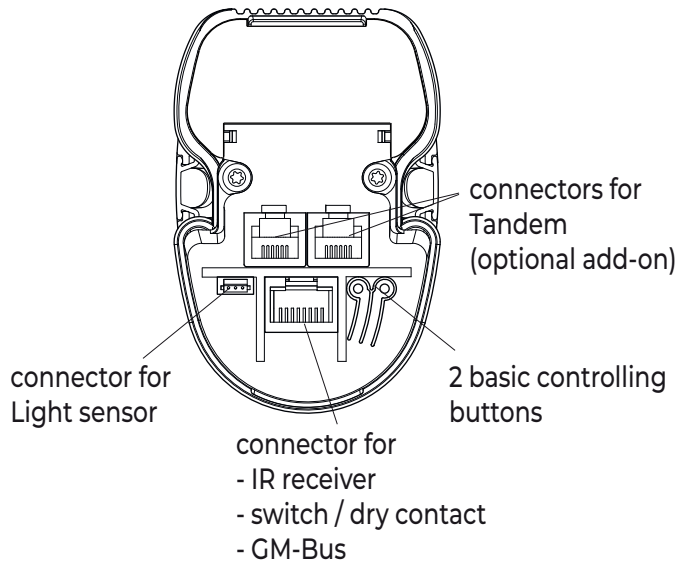
2 Identification motor type



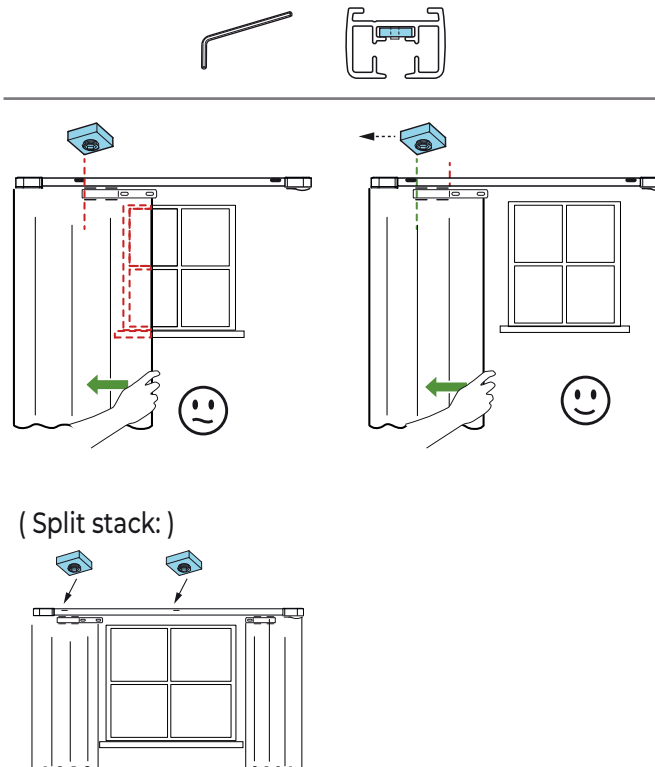
"1" ✓

("4" or "6" : see other Quickmanual GM4 / GM6)

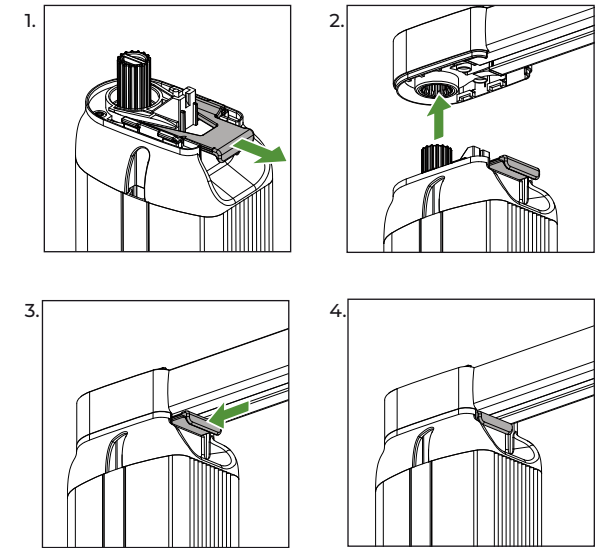
3 Connector area



4 Adjust blocking positions (If needed)



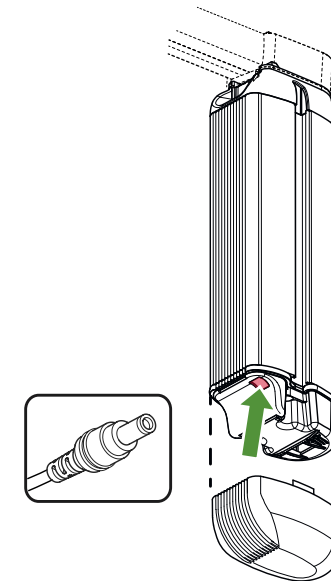
5 Mounting motor unit



6 Powering



First use: if NOT mounted on a 6200 rail system, the motor unit runs in one direction only.

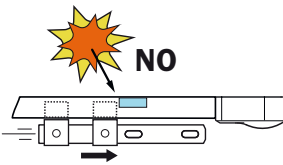


Set end positions



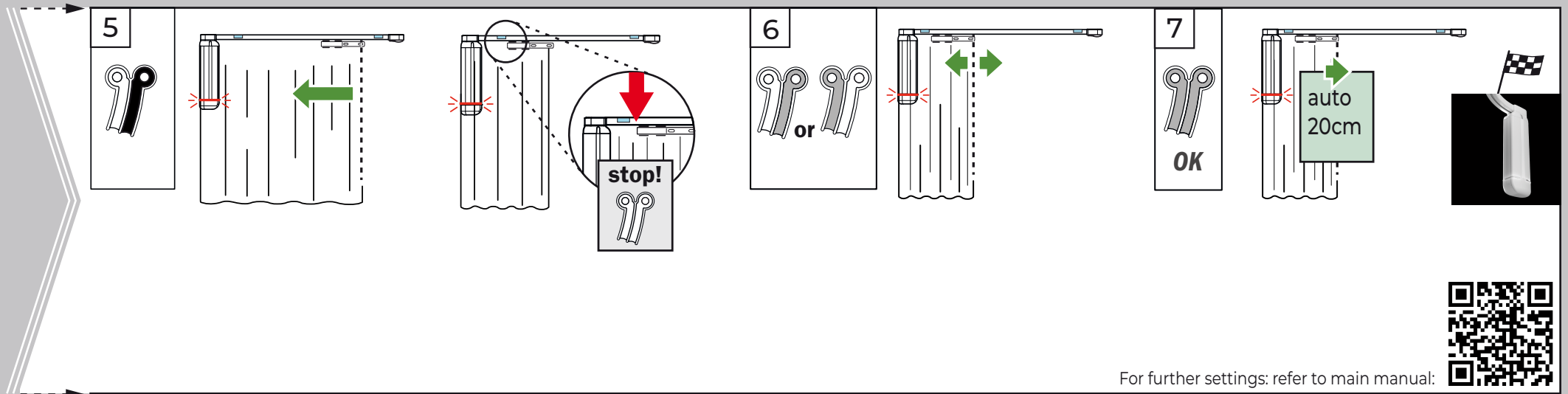
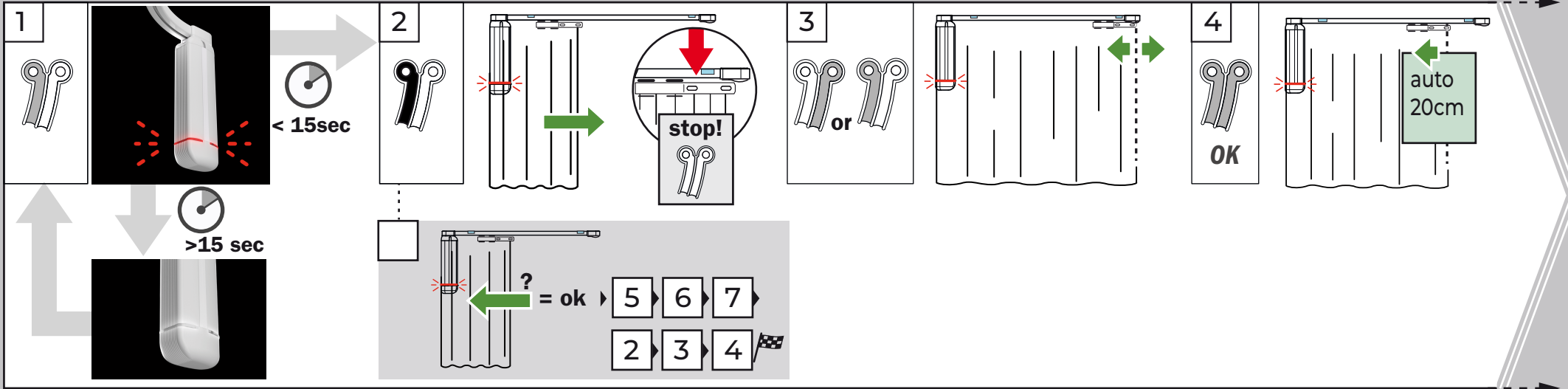
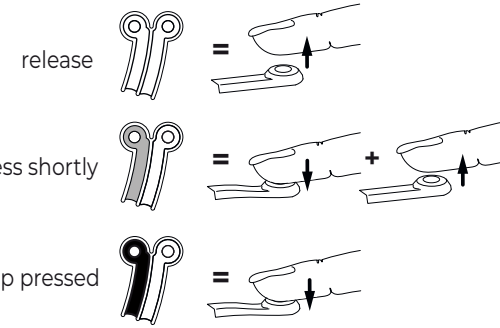
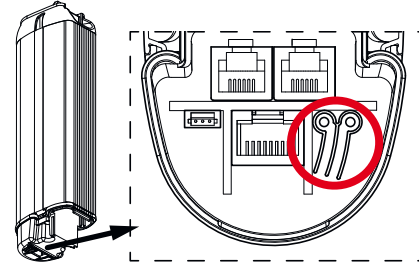
Strong appliance: danger of - pinch point

- damage to the system: avoid hitting end stops when setting end positions.



First use: if NOT mounted on a 6200 rail system while setting end positions, the motor unit will run in one direction only.

Button instruction:



For further settings: refer to main manual: